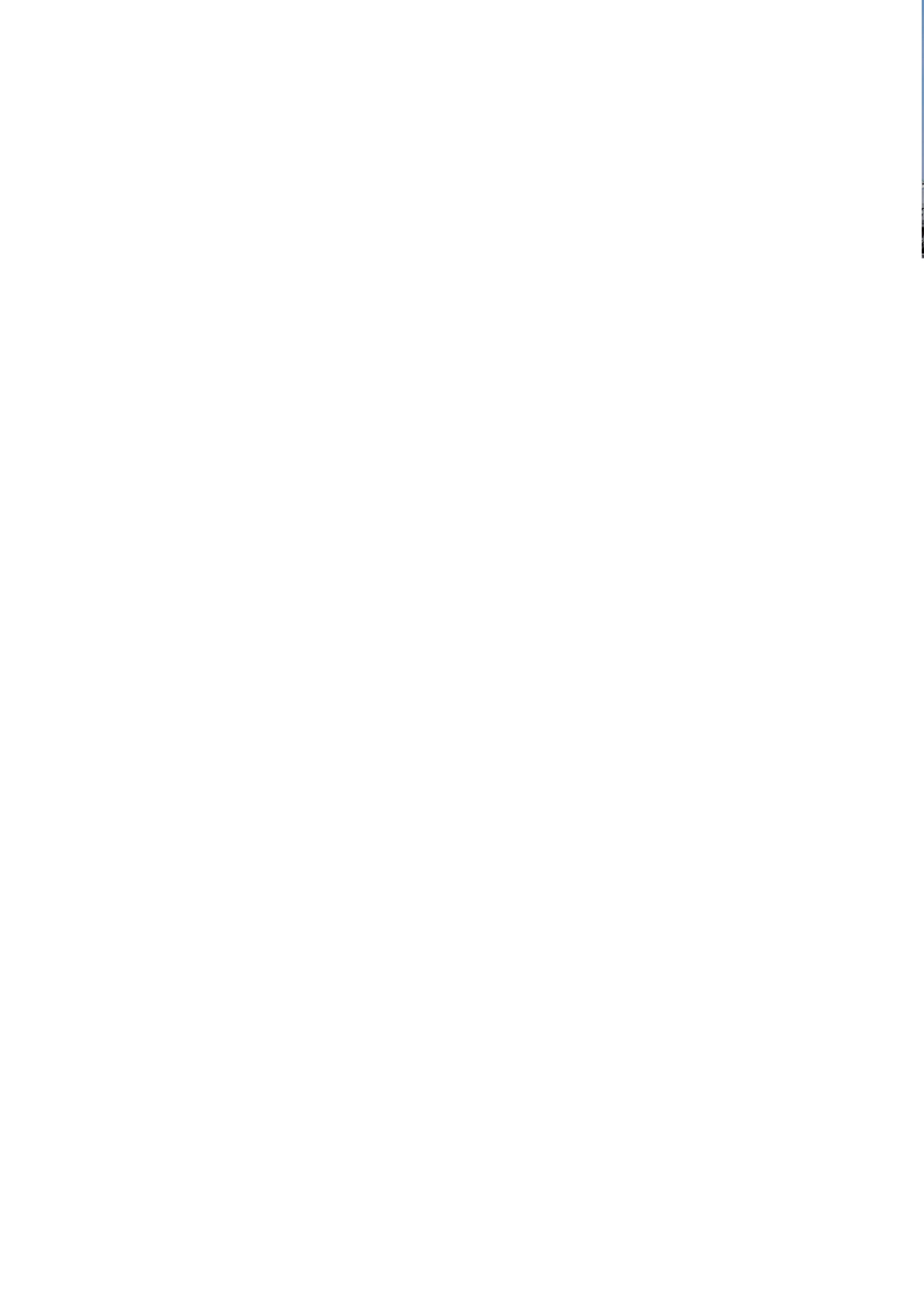


---

Catalog

---

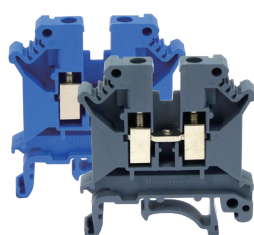
## **Honeywell Rail-Mounted Terminal Blocks**





# Contents

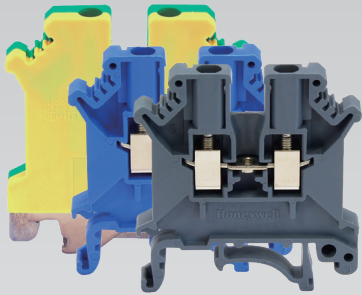
## Honeywell Rail-Mounted Terminal Blocks



Terminal Blocks Basic Knowledge and Application Guide .....	02
Accessories Application Guide .....	03
GK Feed-through Terminal Blocks.....	04
GKH Big Range Feed-through Terminal Blocks .....	06
GK... PE Feed-through Ground Terminal Blocks.....	08
GKH... PE Feed-through Ground Terminal Blocks .....	11
GK... DL Double-level Terminal Blocks.....	12
GDK 4-Conductor Terminal Blocks .....	14
GK ... Coup 3-Conductor terminal blocks.....	15
GK... TL Triple-level Terminal Blocks .....	17
GK... MTK Knife Disconnect Terminal Blocks.....	18
GK... RTK Test Disconnect Terminal Blocks .....	19
GK FUSE Fuse Terminal Blocks.....	20
Accessories .....	21
Marking Strip, Rail.....	24

## Terminal Blocks Basic Knowledge and Application Guide

### GK Feed-through Terminal Blocks

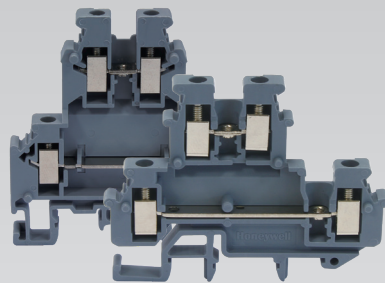


**Introduction:**

GK feed-through terminal blocks provide you a reliable connection in the cabinet.

- Wire diameters: 0.2 to 50 mm<sup>2</sup>
- Current carrying parts in brass, better conductivity
- Stamping screw terminals in one-step forming technology, better tightness

### GK DL Double-level Terminal Blocks

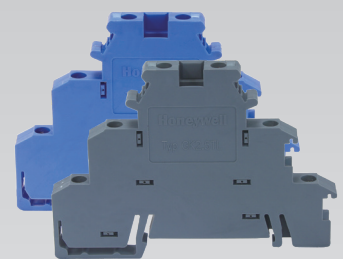


**Introduction:**

GK DL double-level terminal blocks can save half wire connection space in the cabinet.

- Offset level design of upper and lower level allows you to identify different level clearly
- Marking panels can be used in both levels
- Space compensation plates can more clarify the offset, more convenient to mount

### GK TL Triple-level Terminal Blocks

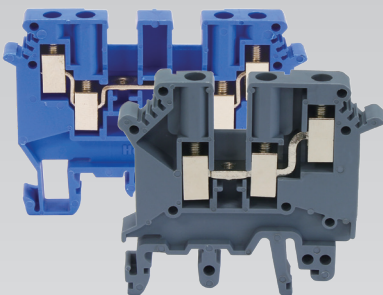


**Introduction:**

GK DL double-level terminal blocks help you easily transmit the sensor signal into the system.

- Plug-in bridge helps you allocate the power source, need no longer connect each sensor with the source one by one
- It can mark the sensor names with the marking panels on the top level

### GK Coup 3-conductor and GDK 4-conductor Terminal blocks

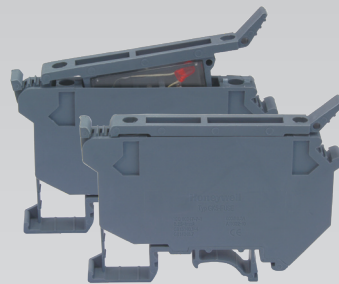


**Introduction:**

GK Coup 3-conductor and GDK 4-conductor terminal blocks help you easily solve the potential allocation problems.

- Tiny volume to save the space in the cabinet
- Plug-in bridge and accessories to allocate the potential
- Same size of GK3 Coup and GK5 Coup, which makes the cabinet neat and tidy

### GK FUSE Fuse Terminal Blocks

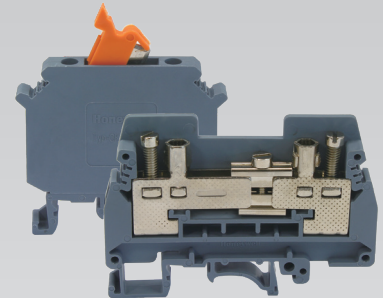


**Introduction:**

GK FUSE fuse terminal blocks help you easily put the fuse into the terminal blocks, effectively protect your equipment.

- Adapt for 5 x 20 mm G Fuse
- Adapt for 5 x 20 mm G Fuse (with LED), 15-30 V AC/DC
- Adapt for 5 x 20 mm G Fuse (with LED), 110-250 V AC/DC

### GK RTK Test Disconnect And GK MTK Knife Disconnect Terminal Blocks



**Introduction:**

GK RTK test disconnect terminal blocks help you easily test the connection of the secondary circuit of the current transformer.

- Clear switch circuit, convenient breaker operation, strong anti short circuit capacity
- Realize the circuit test within less blocks and accessories, convenient mounting and space saving
- GK MTK knife disconnect terminal blocks help you disconnect the circuit nodes which need maintenance

## Accessories Application Guide

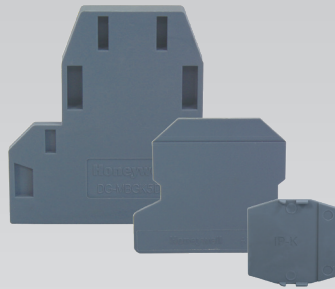
### Covers



#### Introduction:

- Covers are used for covering the uncovered side of the terminal blocks
- Covers can avoid the dust going into the blocks and prevent the metallic parts from being rusted
- Covers will take up space, refer to the catalogue to select the right size

### Partition Plates/Plates/Space Compensation Plates



#### Introduction:

- Space compensation plates can more clarify the offset, more convenient to mount (Adapt for GK DL)
- Partition plates use for grouping the terminal blocks, their outline profile is bigger than terminal blocks, so that the group partition is very clear by vision
- Plates use for partitioning the plug-in bridges, can be mounted after the terminal blocks and does not take up any rail space

### Plug-in Bridges



#### Introduction:

- Plug-in bridges plug in the central of the blocks to realize the horizontal bridge connection. An insulation ring on the screw head to prevent finger touching
- All the metallic parts of the plug-in bridges are in specially surface treated brass
- 2,3,4,5,10-position bridges to be selected

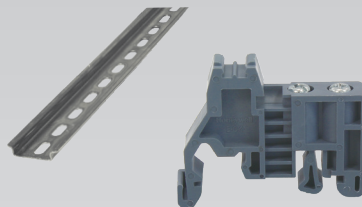
### Lateral Plug-in Bridges



#### Introduction:

- Lateral plug-in bridges can connect the terminal blocks together with the wires, in this case the maximum wire diameters should decrease 1 level.
- The standard 10-position lateral plug-in bridges can be cut into any position that you want. What's more you can also cut the metallic dent to realize the jump position bridge connection
- The plastic part in the rear of the dents can prevent from any electrical touching

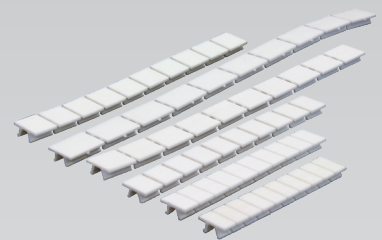
### Rails/End Covers



#### Introduction:

- RD35 U shape and RG32 G shape rails are solid and good looking, fine surface treatment, Accurate dimension, more choice, adapt to various assembly requirement
- End covers adapt for both U and G shape rails, the marking clip can be assembled directly on the end covers

### Marking Strips/Marking Clips

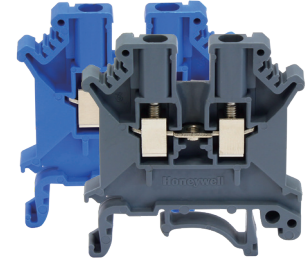
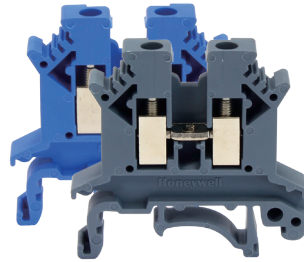


#### Introduction:

- KM marking strips can be inserted into the GK terminal blocks, quick and uniform marking, more neat and tidy
- Marking clips can be assembled on the U or G shape rail, and with inserted marking strip

## GK Feed-through Terminal Blocks

Feed-through Terminal Blocks		
Rated section	2.5mm <sup>2</sup>	2.5mm <sup>2</sup>



				GK 2.5				GK 3	
Dimension (mm)									
Thickness / Width / Cover thickness				6.2 / 42.5 / 1.5				5.2 / 42.5 / 1.8	
Height (RD 35/7.5)				42				47	
Height (RD 35/15)				49.5				54.5	
Height (RG 32)				47				52	
Rated wire section				24-12 AWG				24-12 AWG	
Solid wire		mm <sup>2</sup>		0.2~4.0				0.2~4.0	
Flexible wire		mm <sup>2</sup>		0.2~2.5				0.2~2.5	
Electrical parameters									
Product standard				GB14048.7/IEC60947-7-1				GB14048.7/IEC60947-7-1	
Maximum rated current A				32				32	
Rated voltage V				690				800	
Section mm <sup>2</sup>				4				4	
Torque moment Nm				0.6~0.8				0.6~0.8	
Plastic / Flame retardent grade				PA / V0				PA / V0	
Reference selection				MOQ	Commercial reference	Order reference	MOQ	Commercial reference	Order reference
				Grey	GK 2.5	10 02 10 00	50	GK 3	10 03 10 00
				Blue	GK 2.5 BU	10 02 20 00	50	GK 3 BU	10 03 20 00
Accessories									
Cover		Grey	200	D-GK 2.5	91 02 11 00	200	D-GK 10	91 10 11 00	
		Blue	200	D-GK 2.5 BU	91 02 21 00	200	D-GK 10 BU	91 10 21 00	
Plug-in bridge (10-position) *				10	TB 10-5	92 05 10 00	10	TB 10-3	92 03 10 00
Lateral plug-in bridge (10-position) *				10	IB 10-5	92 05 20 00	10	IB 10-3	92 03 20 00
Partition plate (Thickness1.5mm)				100	ATP-GK	93 10 01 00	100	ATP-GK	93 10 01 00
Plate				200	IP-KK3	93 10 02 00	200	IP-K	93 10 03 00
Marking strip (10-position / White)				100	KM5	90 05 01 00	100	KM3	90 03 01 00
Wiring diagram									
				○ — ● — ○			○ — ● — ○		

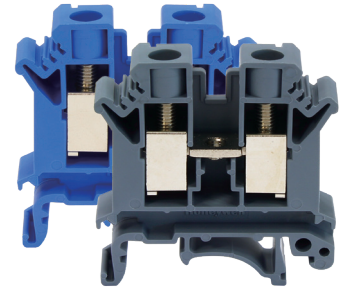
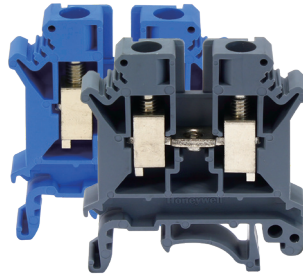
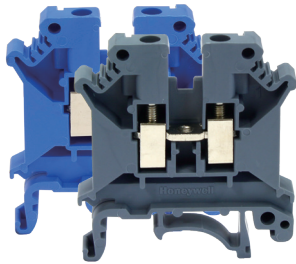
\* Less positions can be selected for plug-in bridge and lateral one:

TB □ - ●● (2/3/4/5 position to be selected in the square)

IB □ - ●● (2/3 position to be selected in the square)

Contact Customer Service hotline for more information 400 876 6608

4mm <sup>2</sup>	6mm <sup>2</sup>	10mm <sup>2</sup>
------------------	------------------	-------------------



<b>GK 5</b>			<b>GK 6</b>			<b>GK 10</b>		
6.2/42.5 / 1.8			8.2 / 42.5 / 1.8			10.2 / 42.5 / 1.8		
47			47			47		
54.5			54.5			54.5		
52			52			52		
24-10 AWG			24-8 AWG			20-6 AWG		
0.2~6.0			0.2~10.0			0.5~16		
0.2~4.0			0.2~6.0			0.5~10		
GB14048.7/IEC60947-7-1			GB14048.7/IEC60947-7-1			GB14048.7/IEC60947-7-1		
41			57			76		
800			800			800		
6			10			16		
0.6~0.8			1.5~1.8			1.5~1.8		
PA / VO			PA / VO			PA / VO		
MOQ	Commercial reference	Order reference	MOQ	Commercial reference	Order reference	MOQ	Commercial reference	Order reference
50	GK 5	10 05 10 00	50	GK 6	10 06 10 00	40	GK 10	10 10 10 00
50	GK 5 BU	10 05 20 00	50	GK 6 BU	10 06 20 00	40	GK 10 BU	10 10 20 00
200	D-GK 10	91 10 11 00	200	D-GK 10	91 10 11 00	200	D-GK 10	91 10 11 00
200	D-GK 10 BU	91 10 21 00	200	D-GK 10 BU	91 10 21 00	200	D-GK 10 BU	91 10 21 00
10	TB 10-5	92 05 10 00	10	TB 10-6	92 06 10 00	10	TB 10-10	92 10 10 00
10	IB 10-5	92 05 20 00	10	IB 10-6	92 06 20 00	10	IB 10-10	92 10 20 00
100	ATP-GK	93 10 01 00	100	ATP-GK	93 10 01 00	100	ATP-GK	93 10 01 00
200	IP-K	93 10 03 00	200	IP-K	93 10 03 00	200	IP-K	93 10 03 00
100	KM5	90 05 01 00	100	KM6	90 06 01 00	100	KM10	90 10 01 00
○ — ● — ○			○ — ● — ○			○ — ● — ○		



## GKH Big Range Feed-through Terminal Blocks

### Big Range Feed-through Terminal Blocks

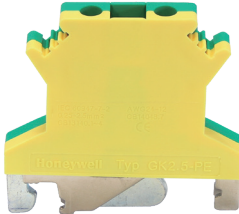
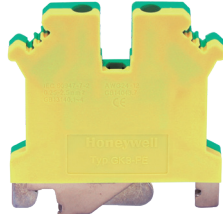
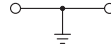
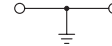
Rated section 50mm<sup>2</sup>



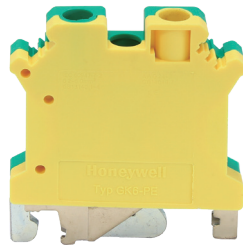
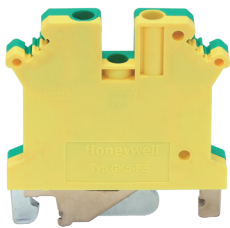
### GKH 50

Dimension (mm)				
Thickness / Width / Cover thickness		20 / 70.5 / -		
Height (RD 35/7.5)		83.5		
Height (RD 35/15)		91		
Height (RG 32)		81.5		
Rated wire section		6-1/0 AWG		
Solid wire	mm <sup>2</sup>	16~50		
Flexible wire	mm <sup>2</sup>	25~50		
Electrical parameters				
Product standard		GB14048.7/IEC60947-7-1		
Maximum rated current A		150		
Rated voltage V		1000		
Section mm <sup>2</sup>		50		
Torque moment Nm		6~8		
Plastic / Flame retardent grade		PA / V0		
Reference selection		MOQ	Commercial reference	Order reference
Grey		10	GKH 50	10 50 10 00
Blue		10	GKH 50 BU	10 50 20 00
附件				
Cover	Grey	Closed, no need extra cover		
	Blue	Closed, no need extra cover		
Plug-in bridge	(5-position)	10	TB 5-50	92 50 15 00
	(3-position)	10	TB 3-50	92 50 13 00
End cover	U type rail	100	E/AL	94 02 00 00
	G type rail	-	-	-
Marking strip (10-position / White)		100	KM50	90 50 01 00
Wiring diagram				
		○ — ● — ○		

## GK... PE Feed-through Ground Terminal Blocks

Feed-through Ground Terminal Blocks							
Rated section		2.5mm <sup>2</sup>			2.5mm <sup>2</sup>		
							
		<b>GK 2.5 PE</b>			<b>GK 3 PE</b>		
Dimension (mm)							
Thickness / Width		6.2 / 42.5			5.2 / 42.5		
Height (RD 35/7.5)		42			47		
Height (RD 35/15)		49.5			54.5		
Height (RG 32)		47			52		
Rated wire section		24-12 AWG			24-12 AWG		
Solid wire mm <sup>2</sup>		0.2~4			0.2~4		
Flexible wire mm <sup>2</sup>		0.2~2.5			0.2~2.5		
Electrical parameters							
Product standard		GB14048.8/IEC60947-7-2			GB14048.8/IEC60947-7-2		
Section mm <sup>2</sup>		4			4		
Torque moment		Terminal screws Nm		M3/0.6~0.8	Terminal screws Nm		M3/0.6~0.8
		Central fixation screws Nm		M3/0.6~0.8	Central fixation screws Nm		M2.5/0.5~0.6
Plastic / Flame retardent grade		PA / V0			PA / V0		
Reference selection		MOQ	Commercial reference	Order reference	MOQ	Commercial reference	Order reference
Earthing terminal Green-yellow		50	GK 2.5 PE	10 02 30 00	50	GK 3 PE	10 03 30 00
Accessories							
Marking strip (10-position / White)		100	KM5	90 05 01 00	100	KM3	90 03 01 00
Wiring diagram							

4mm <sup>2</sup>	6mm <sup>2</sup>	10mm <sup>2</sup>
------------------	------------------	-------------------

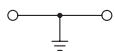


**GK 5 PE**

6.2/42.5  
47  
54.5  
52  
24-10 AWG  
0.2~6  
0.2~4

GB14048.8/IEC60947-7-2  
6  
M3/0.6~0.8  
M3/0.6~0.8  
PA / VO

MOQ	Commercial reference	Order reference
50	GK 5 PE	10 05 30 00
100	KM5	90 05 01 00

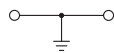


**GK 6 PE**

8.2 / 42.5  
47  
54.5  
52  
24-8 AWG  
0.2~10  
0.2~6

GB14048.8/IEC60947-7-2  
10  
M4/1.5~1.8  
M4/1.5~1.8  
PA / VO

MOQ	Commercial reference	Order reference
50	GK 6 PE	10 06 30 00
100	KM6	90 06 01 00

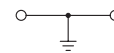


**GK 10 PE**

10.2 / 42.5  
47  
54.5  
52  
20-6 AWG  
0.5~16  
0.5~10

GB14048.8/IEC60947-7-2  
16  
M4/1.5~1.8  
M4/1.5~1.8  
PA / VO

MOQ	Commercial reference	Order reference
40	GK 10 PE	10 10 30 00
100	KM10	90 10 01 00



## GK... PE Feed-through Ground Terminal Blocks

Feed-through Ground Terminal Blocks		
Rated section	16mm <sup>2</sup>	35mm <sup>2</sup>



		GK 16 PE			GK 35 PE		
Dimension (mm)							
Thickness / Width		12.2 / 42.5			15.2 / 50		
Height (RD 35/7.5)		54			62		
Height (RD 35/15)		61.5			69.5		
Height (RG 32)		59			67		
Rated wire section		12-4 AWG			18-1/0 AWG		
Solid wire	mm <sup>2</sup>	2.5~25			0.75~50		
Flexible wire	mm <sup>2</sup>	4~16			0.75~35		
Electrical parameters							
Product standard		GB14048.8/IEC60947-7-2			GB14048.8/IEC60947-7-2		
Section	mm <sup>2</sup>	25			50		
Torque moment	Terminal screws Nm	M4/1.5~1.8			M6/3.2~3.7		
	Central fixation screws Nm	M4/1.5~1.8			M5/2.5~3		
Plastic / Flame retardent grade		PA / VO			PA / VO		
Reference selection		MOQ	Commercial reference	Order reference	MOQ	Commercial reference	Order reference
Earthing terminal	Green-yellow	50	GK 16 PE	10 16 30 00	50	GK 35 PE	10 35 30 00
Accessories							
Marking strip (10-position / White)		100	KM16	90 16 01 00	100	KM50	90 50 01 00
Wiring diagram							

## GKH... PE Feed-through Ground Terminal Blocks

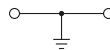
### Feed-through Ground Terminal Blocks

Rated section 50mm<sup>2</sup>



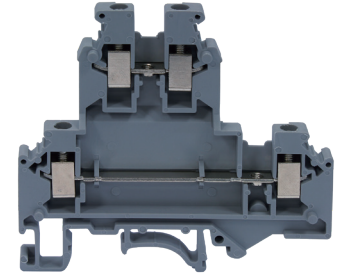
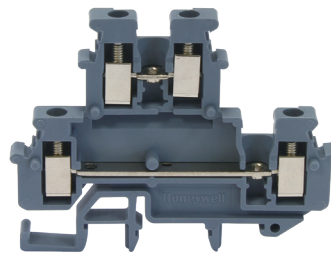
### GKH 50 PE

Dimension (mm)			
Thickness / Width		20 / 70.5	
Height (RD 35/7.5)		-	
Height (RD 35/15)		83.5	
Height (RG 32)		81.5	
Rated wire section		6-1/0 AWG	
Solid wire	mm <sup>2</sup>	16~50	
Flexible wire	mm <sup>2</sup>	25~50	
Electrical parameters			
Product standard		GB14048.8/IEC60947-7-2	
Section	mm <sup>2</sup>	50	
Torque moment	Terminal screws Nm	M6/6~8	
	Central fixation screws Nm	M6/6~8	
Plastic / Flame retardent grade		PA / V0	
Reference selection		MOQ	Commercial reference
Earthing terminal	Green-yellow	10	GKH 50 PE
Accessories			Order reference
Marking strip (10-position / White)		100	KM50
Wiring diagram			



## GK... DL Double-level Terminal Blocks

Double-level Terminal Blocks		
Rated section	2.5mm <sup>2</sup>	2.5mm <sup>2</sup>



		MBGK 2.5 DL			MBGK 3 DL		
Dimension (mm)							
Thickness / Width / Cover thickness		5.2 / 62 / 2.5			5.2 / 67 / 2.5		
Height (RD 35/7.5)		47.5			62		
Height (RD 35/15)		48			69.5		
Height (RG 32)		55.5			67		
Rated wire section		24-12AWG			24-12AWG		
Solid wire mm <sup>2</sup>		0.2~4			0.2~4		
Flexible wire mm <sup>2</sup>		0.2~2.5			0.2~2.5		
Electrical parameters							
Product standard		GB14048.7/IEC60947-7-1			GB14048.7/IEC60947-7-1		
Maximum rated current A		24			32		
Rated voltage V		500			500		
Section mm <sup>2</sup>		4			4		
Torque moment Nm		0.6~0.8			0.6~0.8		
Plastic / Flame retardent grade		PA / V0			PA / V0		
Reference selection		MOQ	Commercial reference	Order reference	MOQ	Commercial reference	Order reference
Grey		60	MBGK 2.5 DL	20 02 10 00	50	MBGK 3 DL	20 03 11 00
Blue		60	MBGK 2.5 DL BU	20 02 20 00	50	MBGK 3 DL BU	20 03 21 00
Accessories							
Cover							
Grey		200	D-MBGK 2.5 DL	91 02 12 00	100	D-MBGK 5 DL	91 05 12 00
Blue		200	D-MBGK 2.5 DL BU	91 02 22 00	100	D-MBGK 5 DL BU	91 05 22 00
Space compensation plate (Thickness 2.5mm)							
Grey (Big)							
Blue (Big)							
Grey (Small)		100	DP-MBGK 2.5 DL	93 30 03 00	100	DP-MBGK 5 DL	93 30 07 00
Blue (Small)		100	DP-MBGK 2.5 DL BU	93 30 04 00	100	DP-MBGK 5 DL BU	93 30 08 00
Plug-in bridge (10-position) *		10	TBMB 10-3	92 03 30 00	10	TBMB 10-3	92 03 30 00
Lateral plug-in bridge (10-position) *		10	IB 10-3	92 03 20 00	10	IB 10-3	92 03 20 00
Plate		200	IP-KK3	93 10 02 00	200	IP-KK3	93 10 02 00
Marking strip (10-position / White)		100	KM3	90 03 01 00	100	KM3	90 03 01 00
Wiring diagram							

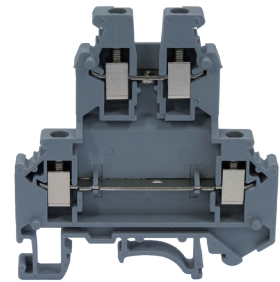
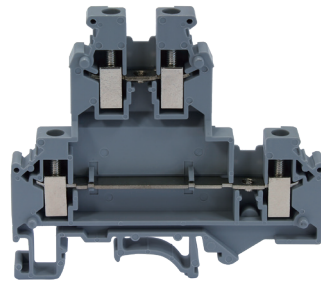
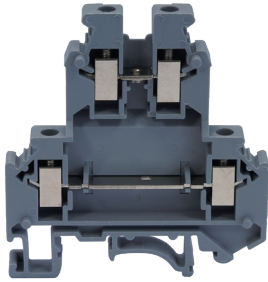
\* Less positions can be selected for plug-in bridge and lateral one:

TB □ - ●● (2/3/4/5 position to be selected in the square)

IB □ - ●● (2/3 position to be selected in the square)

Contact Customer Service hotline for more information 400 876 6608

2.5mm <sup>2</sup>	4mm <sup>2</sup>	4mm <sup>2</sup>
--------------------	------------------	------------------



**GK 3 DL**

5.2 / 56 / 2.5  
62  
69.5  
67  
24-12AWG  
0.2~4  
0.2~2.5

**MBGK 5 DL**

6.2 / 67 / 2.5  
62  
69.5  
67  
24-12AWG  
0.2~4  
0.2~4

**GK 5 DL**

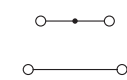
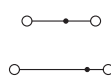
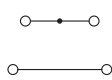
6.2 / 56 / 2.5  
62  
69.5  
67  
24-12AWG  
0.2~4  
0.2~4

GB14048.7/IEC60947-7-1  
32  
500  
4  
0.6~0.8  
PA / VO

GB14048.7/IEC60947-7-1  
32  
500  
4  
0.6~0.8  
PA / VO

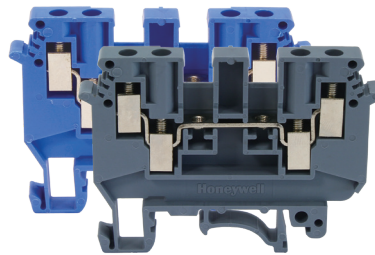
GB14048.7/IEC60947-7-1  
32  
500  
4  
0.6~0.8  
PA / VO

MOQ	Commercial reference	Order reference	MOQ	Commercial reference	Order reference	MOQ	Commercial reference	Order reference
50	GK 3 DL	20 03 12 00	50	MBGK 5 DL	20 05 11 00	50	GK 5 DL	20 05 12 00
50	GK 3 DL BU	20 03 22 00	50	MBGK 5 DL BU	20 05 21 00	50	GK 5 DL BU	20 05 22 00
100	D-GK 5 DL	91 05 13 00	100	D-MBGK 5 DL	91 05 12 00	100	D-GK 5 DL	91 05 13 00
100	D-GK 5 DL BU	91 05 23 00	100	D-MBGK 5 DL BU	91 05 22 00	100	D-GK 5 DL BU	91 05 23 00
100	DG-GK 5 DL	93 30 05 00				100	DG-GK 5 DL	93 30 05 00
100	DG-GK 5 DL BU	93 30 06 00				100	DG-GK 5 DL BU	93 30 06 00
100	DP-GK 5 DL	93 30 09 00	100	DP-MBGK 5 DL	93 30 07 00	100	DP-GK 5 DL	93 30 09 00
100	DP-GK 5 DL BU	93 30 10 00	100	DP-MBGK 5 DL BU	93 30 08 00	100	DP-GK 5 DL BU	93 30 10 00
10	TBMB 10-3	92 03 30 00	10	TB 10-5	92 05 10 00	10	TB 10-5	92 05 10 00
10	IB 10-3	92 03 20 00	10	IB 10-5	92 05 20 00	10	IB 10-5	92 05 20 00
200	IP-KK3	93 10 02 00	200	IP-KK3	93 10 02 00	200	IP-KK3	93 10 02 00
100	KM3	90 03 01 00	100	KM5	90 05 01 00	100	KM5	90 05 01 00



## GDK 4-Conductor Terminal Blocks

4-Conductor Terminal Blocks	
Rated section	4mm <sup>2</sup>



### GDK 4

Dimension (mm)				
Thickness / Width / Cover thickness		6.2 / 63.5 / 1.5		
Height (RD 35/7.5)		47		
Height (RD 35/15)		54.5		
Height (RG 32)		52.5		
Rated wire section		24-10 AWG		
Solid wire	mm <sup>2</sup>	0.2~6		
Flexible wire	mm <sup>2</sup>	0.2~4		
Electrical parameters				
Product standard		GB14048.7/IEC60947-7-1		
Maximum rated current A		32		
Rated voltage V		690		
Section mm <sup>2</sup>		4		
Torque moment Nm		0.6~0.8		
Plastic / Flame retardent grade		PA / VO		
Reference selection		MOQ	Commercial reference	Order reference
	Grey	40	GDK4	40 04 12 00
	Blue	40	GDK4 BU	40 04 22 00
附件				
端板	Grey	200	D-GDK 4	91 04 14 00
	Blue	200	D-GDK 4 BU	91 04 24 00
Plug-in bridge (10-position) *		10	TB 10-5	92 05 10 00
Lateral plug-in bridge (10-position) *		10	IB 10-5	92 05 20 00
Plate		200	IP-KK3	93 10 02 00
Marking strip (10-position / White)		100	KM5	90 05 01 00
Wiring diagram				



\* Less positions can be selected for plug-in bridge and lateral one:

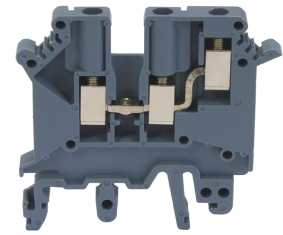
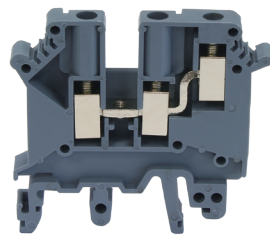
TB □ - ●● (2/3/4/5 position to be selected in the square)

IB □ - ●● (2/3 position to be selected in the square)

Contact Customer Service hotline for more information 400 876 6608

## GK ... Coup 3-Conductor terminal blocks

3-Conductor Terminal Blocks		
Rated section	2.5mm <sup>2</sup>	4mm <sup>2</sup>

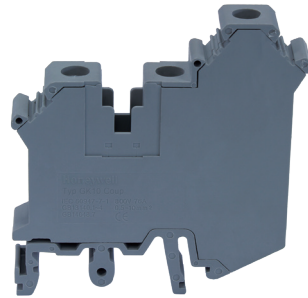


	<b>GK 3 Coup</b>			<b>GK 5 Coup</b>		
Dimension (mm)						
Thickness/Width/ Cover thickness	5.2 / 50.5 / 2			6.2 / 50.5 / 2		
Height (RD 35/7.5)	47			47		
Height (RD 35/15)	54.5			54.5		
Height (RG 32)	52.5			52.5		
Rated wire section	24-14 AWG			24-12 AWG		
Solid wire	mm <sup>2</sup>	0.2~2.5		0.2~4		
Flexible wire	mm <sup>2</sup>	0.2~2.5		0.2~4		
Electrical parameters						
Product standard	GB14048.7/IEC60947-7-1			GB14048.7/IEC60947-7-1		
Maximum rated current	A	24		32		
Rated voltage	V	400		500		
Section	mm <sup>2</sup>	2.5		4		
Torque moment	Nm	0.6~0.8		0.6~0.8		
Plastic / Flame retardent grade	PA / VO			PA / VO		
Reference selection	MOQ	Commercial reference	Order reference	MOQ	Commercial reference	Order reference
	Grey	GK 3 Coup	40 03 11 00	50	GK 5 Coup	40 05 11 00
	Blue	GK 3 Coup BU	40 03 21 00	50	GK 5 Coup BU	40 05 21 00
Accessories						
Cover	Grey	D-GK 5 Coup	91 05 15 00	200	D-GK 5 Coup	91 05 15 00
	Blue	D-GK 5 Coup BU	91 05 25 00	200	D-GK 5 Coup BU	91 05 25 00
Plug-in bridge (10-position) *	10	TB 10-3	92 03 10 00	10	TB 10-5	92 05 10 00
Lateral plug-in bridge (10-position) *	10	IB 10-3	92 03 20 00	10	IB 10-5	92 05 20 00
Plate	200	IP-K	93 10 03 00	200	IP-K	93 10 03 00
Marking strip (10-position / White)	100	KM3	90 03 01 00	100	KM5	90 05 01 00
Wiring diagram						
	○ — ● — ○ — ○			○ — ● — ○ — ○		

\* Less positions can be selected for plug-in bridge and lateral one:  
 TB □ - ●● (2/3/4/5 position to be selected in the square)  
 IB □ - ●● (2/3 position to be selected in the square)  
 Contact Customer Service hotline for more information 400 876 6608

## GK ... Coup 3-Conductor Terminal Blocks

3-Conductor Terminal Blocks	
Rated section	10mm <sup>2</sup>



### GK 10 Coup

Dimension (mm)			
Thickness / Width / Cover thickness		10.2 / 56.5 / -	
Height (RD 35/7.5)		59	
Height (RD 35/15)		66.5	
Height (RG 32)		64	
Rated wire section		20-6 AWG	
Solid wire	mm <sup>2</sup>	0.5~16	
Flexible wire	mm <sup>2</sup>	0.5~10	
Electrical parameters			
Product standard		GB14048.7/IEC60947-7-1	
Maximum rated current	A	76	
Rated voltage	V	800	
Section	mm <sup>2</sup>	16	
Torque moment	Nm	1.5~1.8	
Plastic / Flame retardent grade		PA / VO	
Reference selection		MOQ	Commercial reference
	Grey	50	GK 10 Coup
	Blue	50	GK 10 Coup BU
Accessories			
Cover	Grey	Closed, no cover	
	Blue	Closed, no cover	
Plug-in bridge (10-position) *		10	TB 10-10
Plate		200	IP-KK3
Marking strip (10-position / White)		100	KM10
Wiring diagram			



\* Less positions can be selected for plug-in bridge and lateral one:

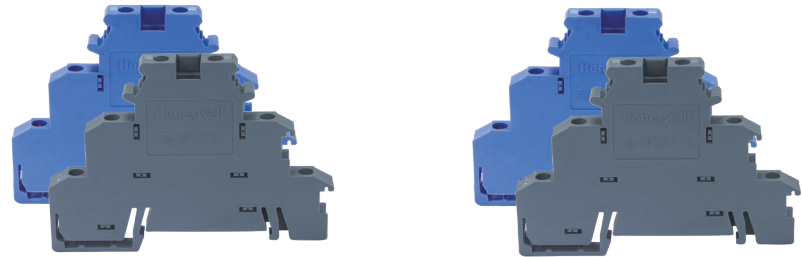
TB □ - ●● (2/3/4/5 position to be selected in the square)

IB □ - ●● (2/3 position to be selected in the square)

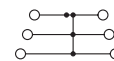
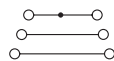
Contact Customer Service hotline for more information 400 876 6608

## GK... TL Triple-level Terminal Blocks

Triple-level Terminal Blocks		
Rated section	2.5mm <sup>2</sup>	2.5mm <sup>2</sup>



	GK 2.5 TL			GK 2.5PV TL			
Dimension (mm)							
Thickness/Width		6.2 / 72.5		6.2 / 72.5			
Height (RD 35/7.5)		54.5		54.5			
Height (RD 35/15)		62		62			
Height (RG 32)		-		-			
Rated wire section		24-12 AWG		24-12 AWG			
Solid wire	mm <sup>2</sup>	0.2~4		0.2~4			
Flexible wire	mm <sup>2</sup>	0.2~2.5		0.2~2.5			
Electrical parameters							
Product standard		GB14048.7/IEC60947-7-1		GB14048.7/IEC60947-7-1			
Maximum rated current	A	30		32			
Rated voltage	V	250		250			
Section	mm <sup>2</sup>	4		4			
Torque moment	Nm	0.6~0.8		0.6~0.8			
Plastic / Flame retardent grade		PA / VO		PA / VO			
Reference selection	MOQ	Commercial reference	Order reference	MOQ	Commercial reference	Order reference	
	Grey	60	GK 2.5 TL	30 02 11 00	60	GK 2.5PV TL	30 02 12 00
	Blue	60	GK 2.5 TL BU	30 02 21 00	60	GK 2.5PV TL BU	30 02 22 00
Accessories							
Plug-in bridge (10-position) *	10	TB 10-5	92 05 10 00	10	TB 10-5	92 05 10 00	
Marking strip (10-position / White) *	100	KM5	90 05 01 00	100	KM5	90 05 01 00	
Wiring diagram							



\* Less positions can be selected for plug-in bridge and lateral one:

TB □ - ●● (2/3/4/5 position to be selected in the square)

IB □ - ●● (2/3 position to be selected in the square)

Contact Customer Service hotline for more information 400 876 6608

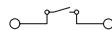
## GK... MTK Knife Disconnect Terminal Blocks

Knife Disconnect Terminal Blocks	
Rated section	4mm <sup>2</sup>



### GK 5 MTK-P

Dimension (mm)			
Thickness / Width		5.2 / 46	
Height (RD 35/7.5)		51.5	
Height (RD 35/15)		59	
Height (RG 32)		56	
Rated wire section		24-10 AWG	
Solid wire	mm <sup>2</sup>	0.2~6	
Flexible wire	mm <sup>2</sup>	0.2~4	
Electrical parameters			
Product standard		GB14048.7/IEC60947-7-1	
Maximum rated current	A	16	
Rated voltage	V	800	
Section	mm <sup>2</sup>	6	
Torque moment	Nm	0.5~0.6	
Plastic / Flame retardent grade		PA / V0	
Reference selection	MOQ	Commercial reference	Order reference
Knife disconnect terminal blocks	40	GK 5 MTK-P	50 05 11 00
Accessories			
Lateral plug-in bridge (10-position) *	10	IB10-5	92 05 20 00
Marking strip (10-position / White)	100	KM5	90 05 01 00
Wiring diagram			



\* Less positions can be selected for Lateral plug-in bridge:

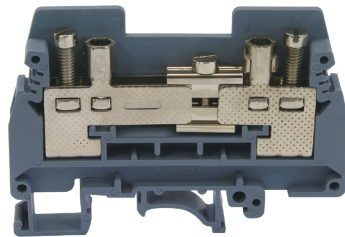
IB□-●● (2/3 position to be selected in the square)

Contact Customer Service hotline for more information 400 876 6608

## GK... RTK Test Disconnect Terminal Blocks

### Test Disconnect Terminal Blocks

Rated section 6mm<sup>2</sup>



### GK 6 RTK

Dimension (mm)			
Thickness/Width/ Cover thickness		8.2 / 72 / 2.2	
Height (RD 35/7.5)		51.5	
Height (RD 35/15)		59	
Height (RG 32)		56	
Rated wire section		20-8 AWG	
Solid wire	mm <sup>2</sup>	0.5~10	
Flexible wire	mm <sup>2</sup>	0.5~6	
Electrical parameters			
Product standard		GB14048.7/IEC60947-7-1	
Maximum rated current	A	57	
Rated voltage	V	400	
Section	mm <sup>2</sup>	10	
Torque moment	Connecting screw Nm	M4: 1.2~1.5	
	Split slide block screw Nm	M3: 0.6~0.8	
Plastic / Flame retardent grade		PA / V0	
Reference selection	MOQ	Commercial reference	Order reference
Test disconnect terminal blocks	50	GK 6 RTK	50 06 12 00
Accessories			
Cover	100	D-GRTK	91 06 17 00
Plug-in bridge	10	TB10-RTK <sup>(1)</sup>	92 06 40 00
Switch plug-in bridge	25	USB 2-RTK <sup>(2)</sup>	92 06 50 00
	10	SB 2-RTK <sup>(3)</sup>	92 06 70 00
	10	SB 4-RTK <sup>(4)</sup>	92 06 80 00
Plate	100	IP-RTK	93 50 03 00
Partition plate	100	ATP-RTK	93 50 01 00
Label bar	100	KM6	90 06 01 00
Wiring diagram			



(1) Less positions can be selected for plug-in bridge:

TB □ - ●● (2/3/4/5 position to be selected in the square), use for the horizontal connection on the both sides of the switch

(2) Use for 2 pieces of test terminal blocks on both sides of the switch, inside to break (including 2 screws)

(3) Use for 2 pieces of test terminal blocks on the right side only (including 2 screws)

(4) Use for short circuit with the 3-phase current transformer, on the right side only (including 4 screws)

Contact Customer Service hotline for more information 400 876 6608

## GK FUSE Fuse Terminal Blocks

Fuse Terminal Blocks						
Rated section		4mm <sup>2</sup>			10mm <sup>2</sup>	
		<b>GK5 FUSE 分断旋臂式<sup>(1)</sup></b>			<b>GK10 DRFUSE 螺帽式<sup>(2)</sup></b>	
Dimension (mm)						
Thickness / Width		8.2 / 72.5			12 / 62	
Height (RD 35/7.5)		56.5			59	
Height (RD 35/15)		64			66.5	
Height (RG 32)		61.5			64	
Rated wire section						
Solid wire		mm <sup>2</sup> 0.2~4			20-6 AWG	
Flexible wire		mm <sup>2</sup> 0.2~4			20-6 AWG	
Electrical parameters						
Product standard		GB14048.18/IEC60947-7-3			GB14048.18/IEC60947-7-3	
Maximum rated current A		6.3			10	
Rated voltage V		600			800	
Section mm <sup>2</sup>		4			10	
Torque moment Nm		0.6~0.8			1.5~1.8	
Plastic / Flame retardent grade		PA / V0			PA / V0	
Reference selection						
		MOQ	Commercial reference	Order reference	MOQ	Commercial reference
Fuse terminal blocks		50	GK5 FUSE	50 03 13 00	50	GK10 DRFUSE
Fuse terminal blocks,with LED/15~30 VAC/DC		50	GK5 FUSE 24LED	50 03 14 00	50	GK10 DRFUSE 24LED
Fuse terminal blocks, with LED/110~250 VAC/DC		50	GK5 FUSE 250LED	50 03 15 00	50	GK10 DRFUSE 250LED
Accessories						
Lateral plug-in bridge (10-position) *		10	IBS10-6	92 06 30 00	-	
Marking strip (10-position / White)		100	KM6	90 06 01 00	-	
Wiring diagram						

\* Less positions can be selected for Lateral plug-in bridge:

IB□ - ●● (2/3 position to be selected in the square)

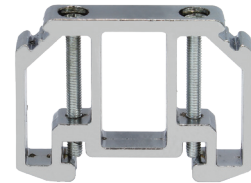
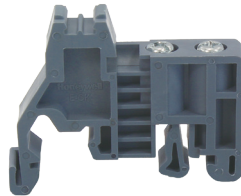
Contact Customer Service hotline for more information 400 633 6089

(1) Use for assembling 5 x 20mm, 5 x 25mm and 5 x 30mm G type fuse.

(2) Use for assembling 5 x 20mm G type fuse.

## Accessories

### Accessories



		终端固定件 E/GK			大电流端子终端固定件 E/AL		
Dimension (mm)							
Thickness / Width		9.5 / 43.5			10 / 59		
Height (RD 35/7.5)		37.5			44		
Height (RD 35/15)		45			44		
Height (RG 32)		43			-		
Plastic type							
Flame retardent grade (According to UL94)		V2			-		
Plastic		PA			-		
Temperature rise level RTi / Ti		125 / 100			-		
Accessory selection		MOQ	Commercial reference	Order reference	MOQ	Commercial reference	Order reference
Commercial reference	Grey	100	E/GK	94 01 00 00	100	E/AL	94 02 00 00
Description		End covers assemble on the G or U shape rail, KLM marking clips can be clipped on them			Use for the big range GKH 50, in aluminium, assembled on the RD35 U shape rail		

## Accessories

### Accessories



	Marking terminal blocks UBE/D			Marking terminal blocks UBE/SD			
Dimension (mm)							
Thickness/Width	19.5 / 43			15.5 / 43			
Height (RD 35/7.5)	46.5			46.5			
Height (RD 35/15)	54			54			
Height (RG 32)	52			52			
Plastic type							
Flame retardent grade (According to UL94)	VO			VO			
Plastic	PA			PA			
Temperature rise level RTi / Ti	125 / 100			125 / 100			
Accessory selection	MOQ	Commercial reference	Order reference	MOQ	Commercial reference	Order reference	
Commercial reference	Grey	100	UBE/D	95 01 00 00	100	UBE/SD	95 02 00 00
Description	Use for marking terminal blocks, can be assembled on the G or U shape rail, without inserted marking strip			Use for marking terminal blocks, can be assembled on the G or U shape rail, without inserted marking strip			



**Marking terminal blocks UBE/E**

9.0 / 43  
46.5  
54  
52

V0  
PA  
125 / 100

MOQ	Commercial reference	Order reference
100	UBE	95 03 00 00

Use for marking terminal blocks, can be assembled on the G or U shape rail, without inserted marking strip, with clamshell, written area 40x13mm

**Marking clip KLM-A**

10 / 46  
-  
-  
-

V2  
SAN  
125 / 100

MOQ	Commercial reference	Order reference
100	KLM-A	95 04 00 00

Use for marking terminal blocks, can be clipped on the E-GK end cover, upper height adjustable, without inserted marking strip

## Marking Strip, Rail

### KMKM Feed-through Marking Strip



Blank (10-position)			Horizontal printing 1-10 (10-position)			Vertical printing 1-10 (10-position)		
Commercial reference	Order reference	MOQ	Commercial reference	Order reference	MOQ	Commercial reference	Order reference	MOQ
KM3	90 03 01 00	100	KM3-H10	90 03 02 00	100	KM3-S10	90 03 03 00	100
KM5	90 05 01 00	100	KM5-H10	90 05 02 00	100	KM5-S10	90 05 03 00	100
KM6	90 06 01 00	100	KM6-H10	90 06 02 00	100	KM6-S10	90 06 03 00	100
KM10	90 10 01 00	100	KM10-H10	90 10 02 00	100	KM10-S10	90 10 03 00	100
KM16	90 16 01 00	100	KM16-H10	90 16 02 00	100	KM16-S10	90 16 03 00	100
KM50	90 50 01 00	100	KM50-H10	90 50 02 00	100	KM50-S10	90 50 03 00	100

If need 11-20 figures printing, only need to replace the above figures from 10 to 20, if need 21-30 figures printing, only need to replace above figures from 10 to 30, and so on upto 100.

### RD/RG Installation Rail (Made In Steel)



U type rail (35/7.5)			U type rail (35/15)			G type rail		
Commercial reference	Order reference	MOQ	Commercial reference	Order reference	MOQ	Commercial reference	Order reference	MOQ
RD 35/7.5 A1	98 51 11 00	25	RD 35/15 A1	98 51 31 00	20	RG 32 A1	98 31 01 00	20
RD 35/7.5 B1	98 52 11 00	25	RD 35/15 B1	98 52 31 00	20	RG 32 B1	98 32 01 00	20
RD 35/7.5 A2	98 51 12 00	25	RD 35/15 A2	98 51 32 00	20	RG 32 A2	98 31 02 00	20
RD 35/7.5 B2	98 52 12 00	25	RD 35/15 B2	98 52 32 00	20	RG 32 B2	98 32 02 00	20

Last 2 letters of the rails: A: without drill hole; b: with drill hole; 1: 1m length;2: 2m length.

\* According to IEC 60947-7-2, steel rails are allowed to use as ground bus (Use as PE terminal blocks), but are not allowed to use as PEN.

# NOTES

A large rectangular area filled with a grid of dashed lines, intended for writing notes. The grid consists of 20 columns and 30 rows of small squares.

Honeywell reserves the right to make technical revision or changes to this manual.

**Customer support line: 400 876 6608**

Contact of the Greater China Region

GTS Electric (Suzhou) Co., Ltd.

[www.honeywell-electric.com](http://www.honeywell-electric.com)

The Honeywell Trademark is used under license from Honeywell International Inc.

Honeywell International Inc. makes no representations or warranties with respect to this product.

This product is distributed by GTS Electric (Shanghai) Co., Ltd.

GTS\_CA\_RTb\_EN | V01 | Apr/2023  
©2023 GTS Electric (Shanghai) Co., Ltd.

**Honeywell**